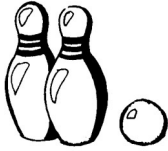


1



Colorie le dessin si tu entends « c »



2



Coche la case quand tu entends « c »



--	--	--



--	--	--



--	--	--



--	--	--

3

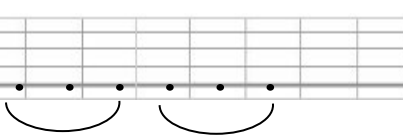


Ecris les syllabes manquantes

• qu



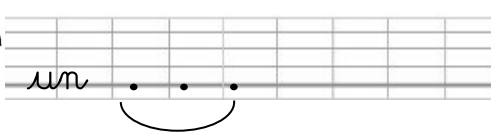
le



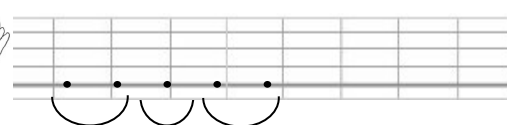
• q




un






• k



4  **colorie** Colorie en rouge lorsque tu vois qu qu en bleu ch ch et en vert k k

- Christine - qualité - kimono - Taaki - quinte
- L'équipe joue avec une raquette et une casquette.

5  **colle** les étiquettes des mots dans la colonne adéquate.

 qu	 ch	 k

6  **colorie** les syllabes selon le code couleur.

quai	che	koi	quei	chi	ket
------	-----	-----	------	-----	-----

quai	quei	chi	quei	quei	chi	quei	quai
koi	quai	ket	ket	ket	ket	quai	koi
koi	ket	quai	che	che	quai	ket	koi
koi	che	ket	quei	quei	ket	che	koi
che	chi	quei	chi	chi	quei	chi	che